

Grounds Master Plan

Master Plan Goal

THS has developed this master plan as a guide to assist in future decisions and promote thoughtful development of the Museum Grounds, the Robb property and Belle's Barn Site.

Overall Concept

The Museum Grounds Master Plan maintains Talkeetna's unique character and culture while creating a site with an inviting, friendly atmosphere that is informative, as well as safe and accessible.

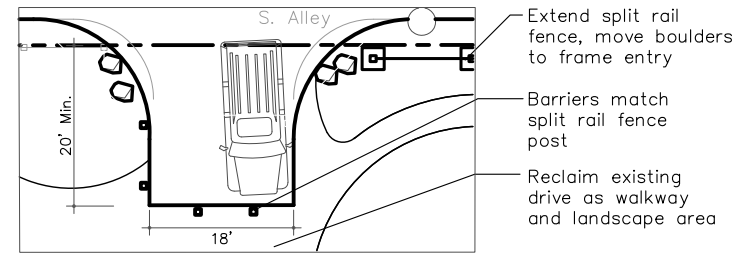
Circulation

Vehicle: Overall vehicle circulation remains similar. Relocate existing entry at D St, add a new exit with one-way flow in the parking lot to improve circulation, safety and maintenance. ④

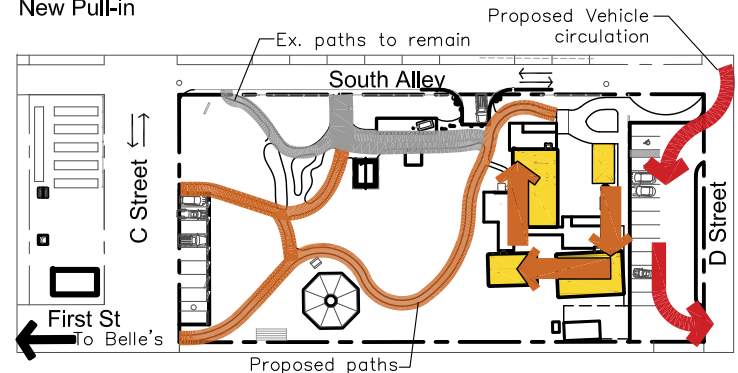
Provide ADA parking spaces w/ signage. ④

Formalize 10 parking spaces perpendicular to C Street, reclaim space at corner for signage and improved visibility of the Museum. ⑫ ⑬

Reduce length of driveway off of South Alley to Pull-in parking space. ⑱



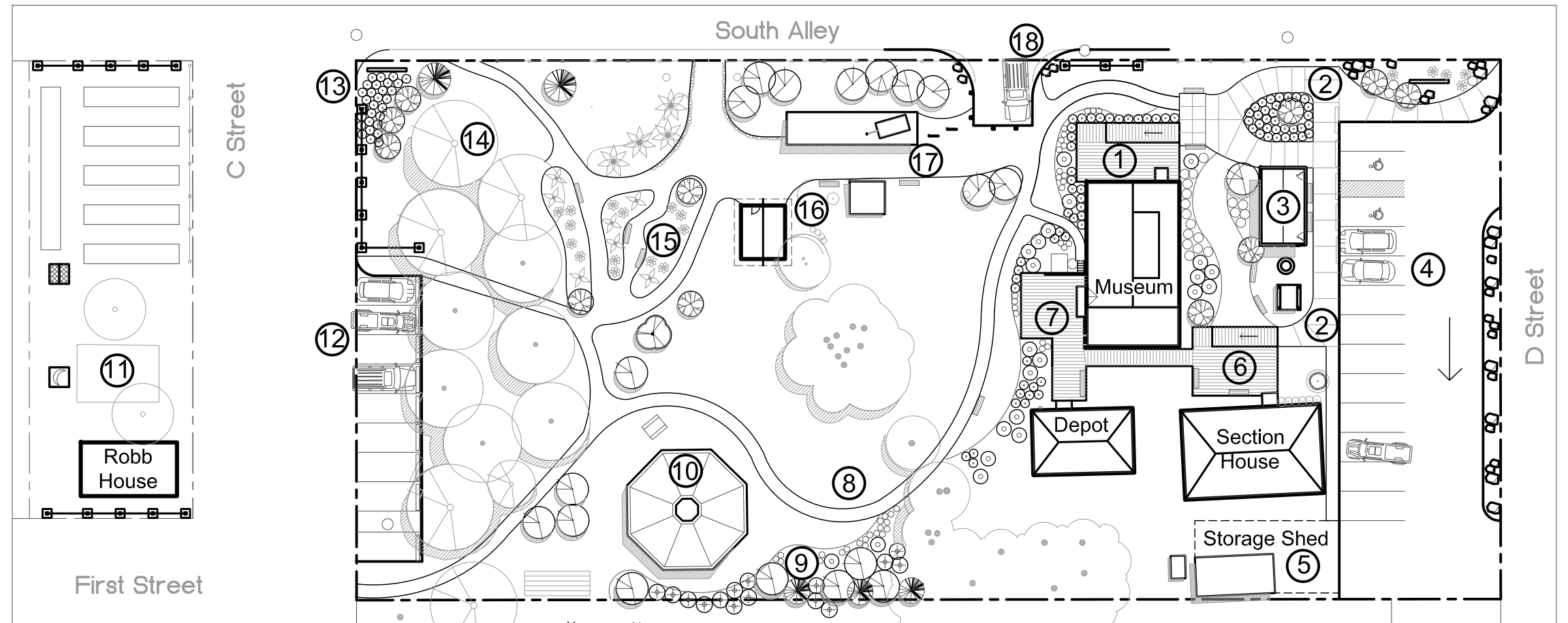
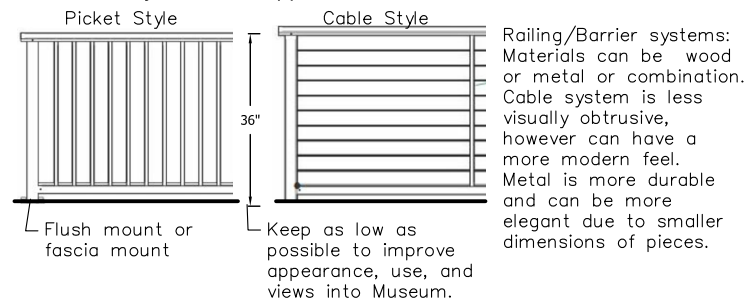
New Pull-in



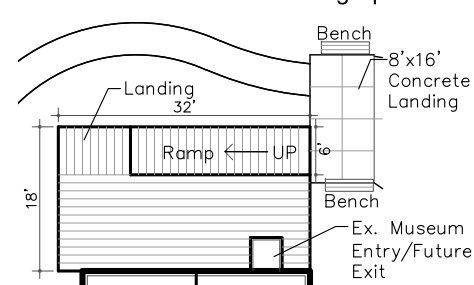
Pedestrian: With new Info Center Building that includes ticket purchase counter, pedestrians can be routed to the Section House, then Depot, then Museum then to the Grounds.

The trail system, approx. 540 l.f. ⑧ and 4' to 8' wide, has accessible surfaces that wind through the site connecting displays, site amenities and adjacent community access points.

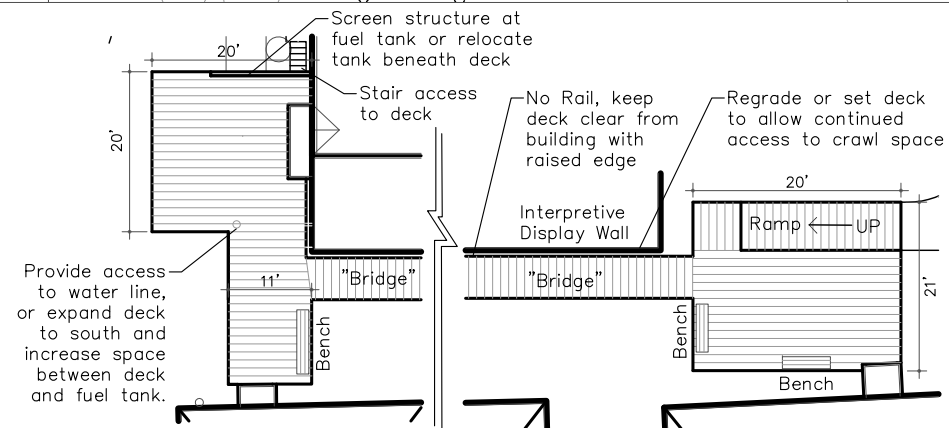
Outdoor classrooms and gathering: Replace existing deteriorating decks with new deck system that creates series of outdoor classrooms. Select deck material made from recycled plastic lumber, cedar, or pressure treated material. All raised decks require barriers, ramps require handrails. Existing handrails do not meet ADA and are deteriorated and unsightly. Select handrail and barrier materials to reduce heavy, cluttered appearance.



Outdoor Classrooms/Gathering Spaces



① North Deck Layout
Note dimensions are suggested and should be based ramps, creating usable spaces for gathering and maintenance.



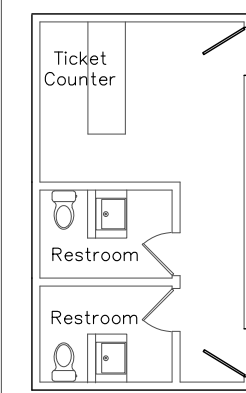
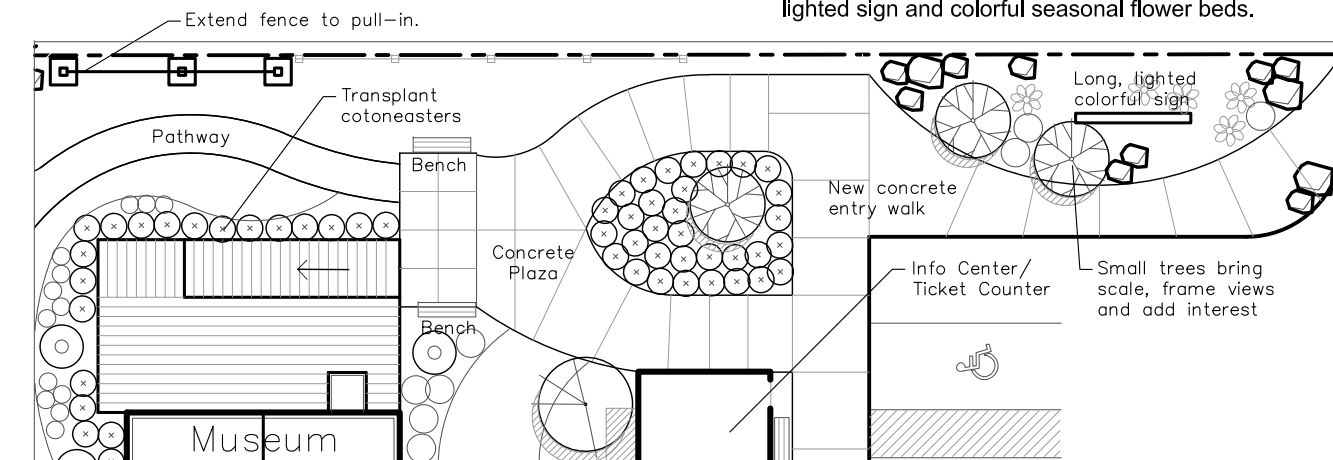
⑦ West/Depot Deck Layout

⑥ Section House Deck Layout

Entry Plazas

A series of gathering spaces are provided to accommodate a variety of groups and activities. The area north of the Info Center allows small and larger groups to meet and wait for their parties prior to ticketing, it also acts as a meeting place for visitors who have completed their

visit to the buildings and are on their way to the grounds or back into town. ② The north plaza creates an important focal point that sets the stage for the Museum and becomes a place maker with the use of benches and landscaping including small trees, lighted sign and colorful seasonal flower beds.



③ Floorplan Info Center

Site Amenities

Beacon/Airfield Display ② Use south side of Info Center walls for interpretive materials, create interpretive plaza with views to airstrip

Storage Shed ⑤ 12'x24' shed with gravel work pad & relocated fuel tank

Buffer Landscaping ⑨ Plant trees & shrubs to provide separation to ballfield

Gazebo ⑩ The gazebo provides a partially sheltered space that will increase the use of the site throughout the season. Explore structures that have small town character, use natural wood, feature simplicity and durability. Explore a central fire pit.



Harry Robb Property ⑪ Install corner fence, keep strawberry patch, add historic garden beds, add chicken coop and outhouse displays

C St and Alley ⑬ Define Museum grounds, install sign similar to D street match front, landscape with small trees and short, low maintenance shrubs, add lighting.

Forest ⑭ Preserve to the extent possible. Remove invasive species and replace with native trees and shrubs. Keep plantings open to allow views throughout site.

Bethany's Garden ⑮ Expand Bethany's garden, add sculpture and plantings, add benches and paths.

Ole Dahl Cabin Display ⑯ Add smokehouse.

Museum Promenade ⑰ Create exterior displays using existing gravel path as main promenade. Locate interpretive signs, benches and landscaping to create space. Install 10'x40' covered wood structure with lights for winter security.

